

Sunreef 80 Diana RR

ALL ABOUT ELEGANCE



FG YACHTS



OUTSTANDING FEATURES



Transoceanic
capabilities



54m²
flybridge

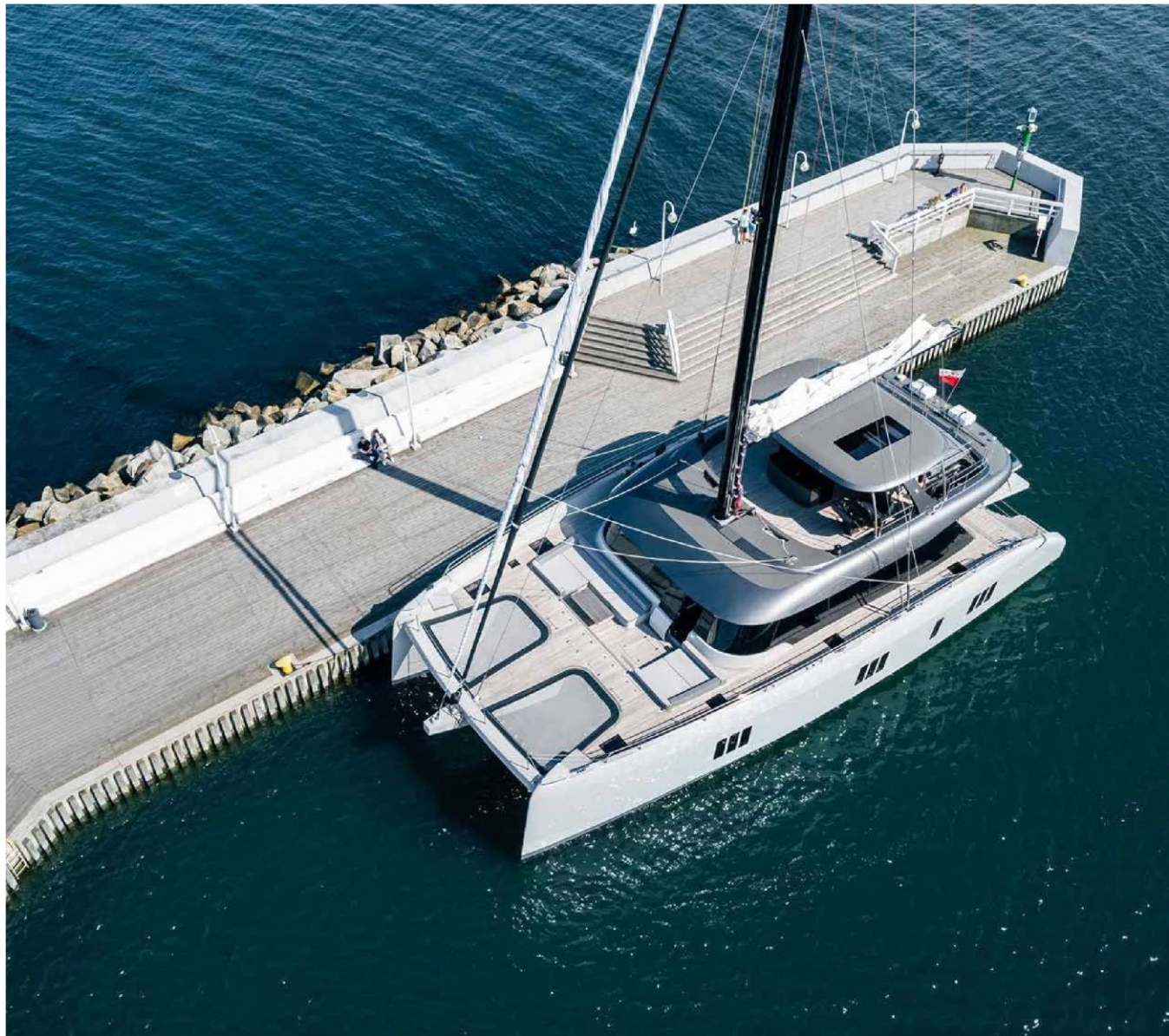


Hydraulic aft platform
with **1000kg** capacity

STYLE, SPACE AND COMFORT

DESTINED FOR EXTENDED VOYAGES

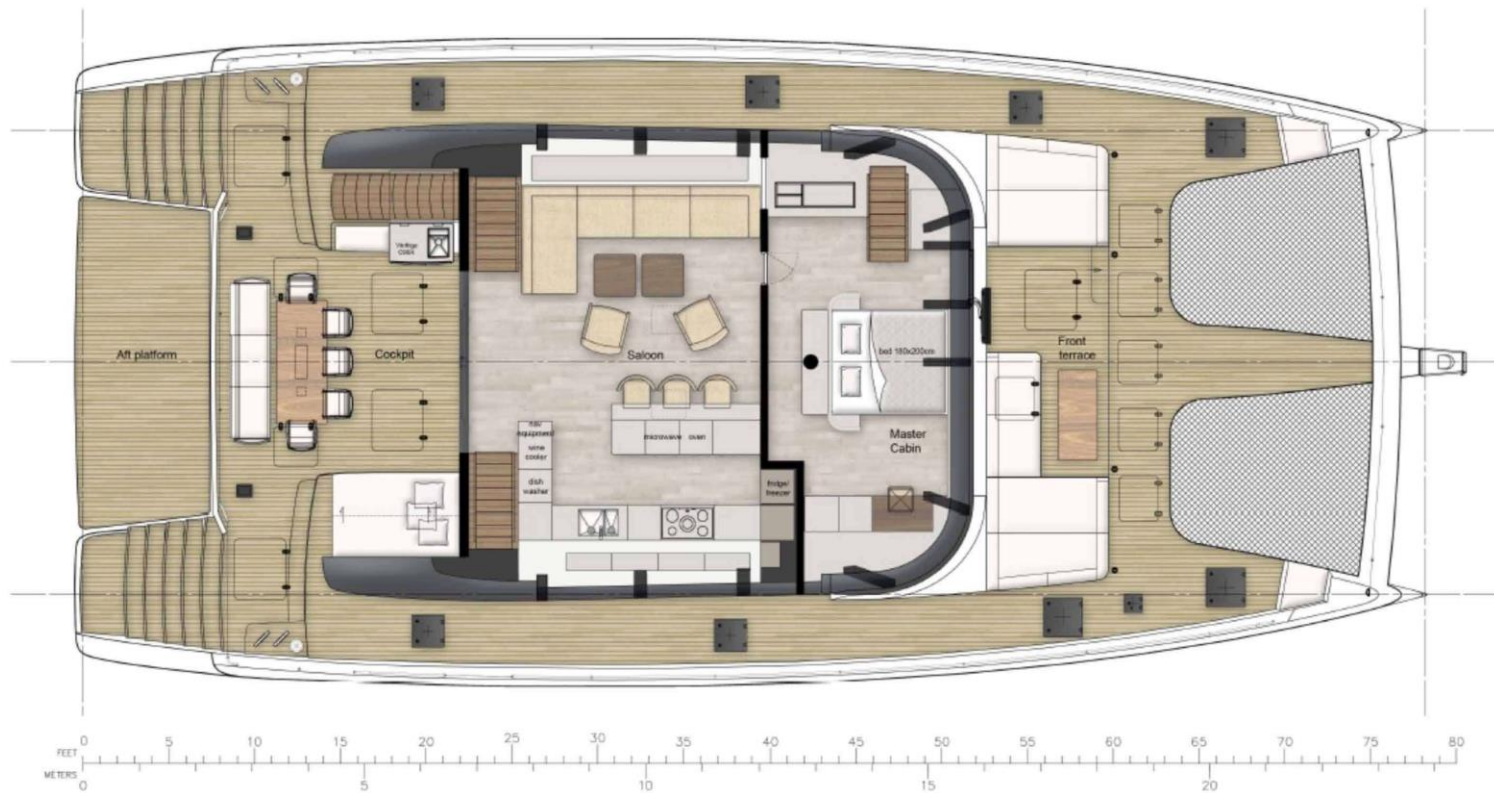
Intended for private navigation, the Sunreef 80 Diana RR boasts a unique bespoke layout and a spectacular interior finish. With impressive living space and amazing alfresco dining areas, this new Sunreef 80 sail catamaran is the true essence of elegance and luxury at sea.





COCKPIT

MAIN DECK





RETREAT AND RELAX

The bow terrace welcomes Diana RR's guests to a large sunken lounging area with comfortable settees and two big trampolines. The teak clad terrace is well shielded from wind and can also be protected from sun with a large awning.

The yacht's hydraulic aft platform transports the tender, but also doubles up as a private beach, offering a full-beam area dedicated to sunning and watersports.



BOW TERRACE

THE INGENIOUS DESIGN

CLASSIC MODERNITY

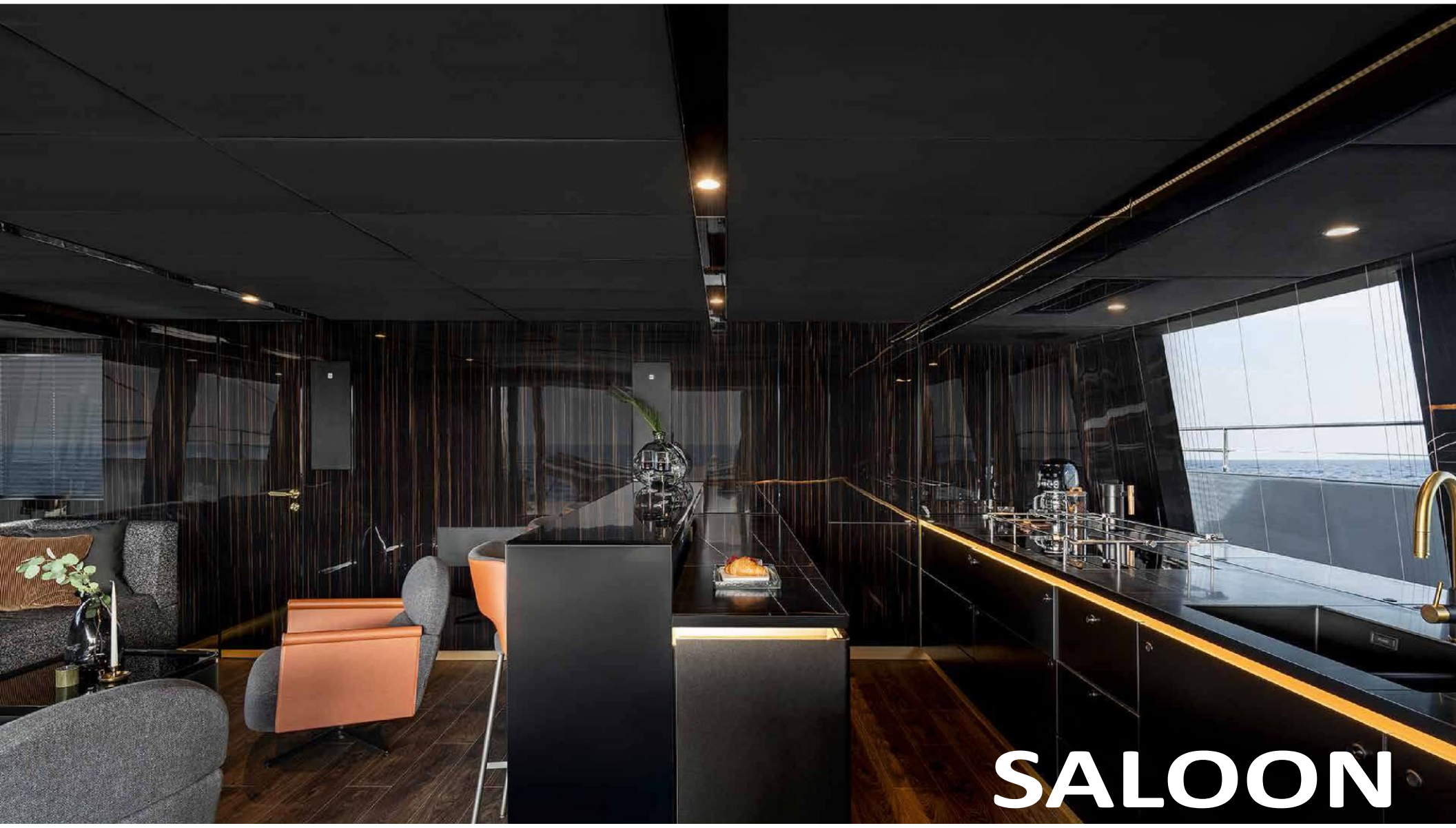
Diana RR's main deck saloon features a well-equipped galley to starboard with a kitchen island and bar. To portside, guests can relax on the large L-shaped sofa.



SALOON



SALOON



SALOON

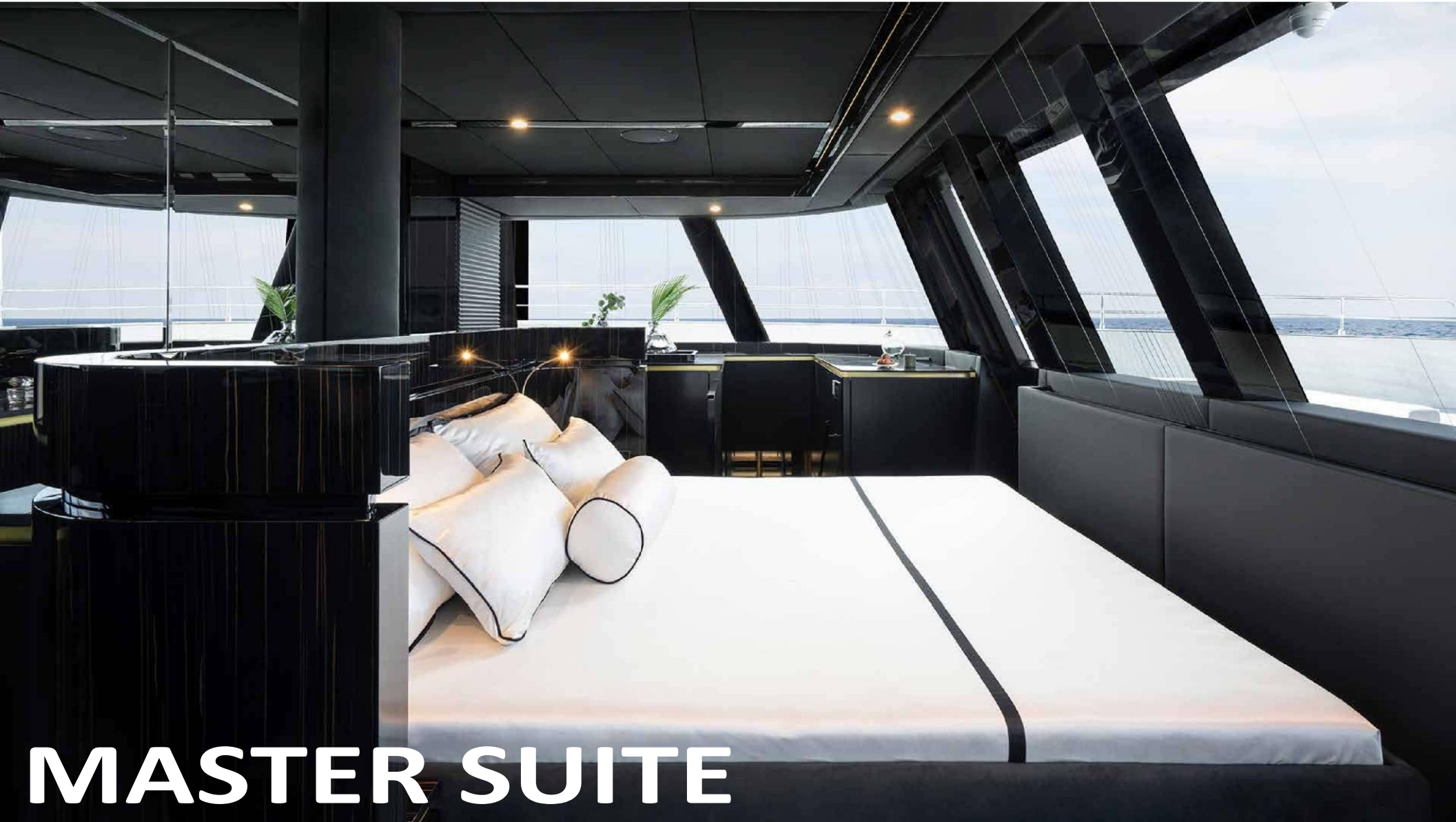


SALOON

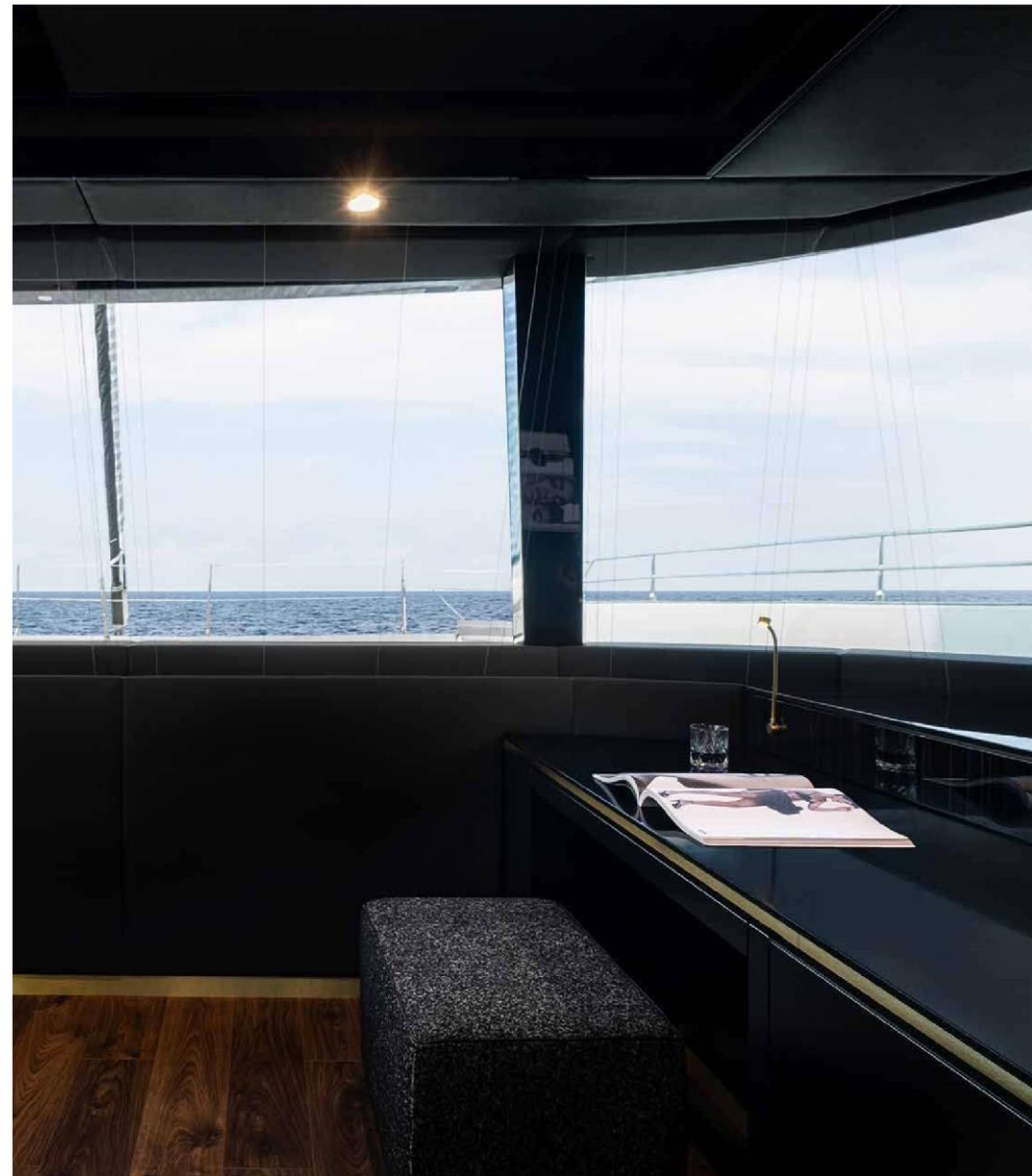


MASTER SUITE

In the bow portion of the main deck, Diana RR features a lavish master suite with ocean views and direct access to the bow terrace. The owners also enjoy a large dressing room and a vast, custom-designed bathroom.



MASTER SUITE



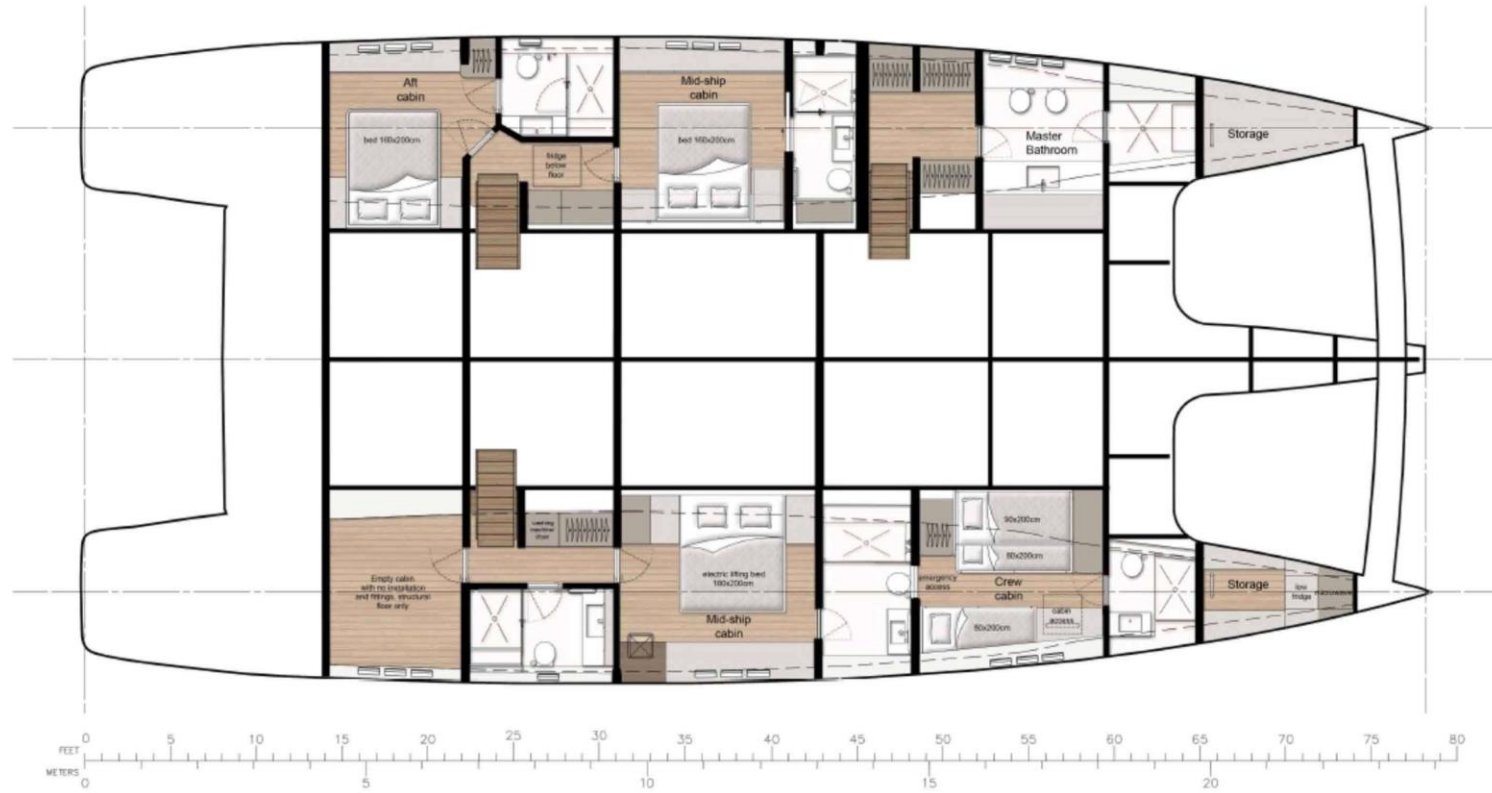


MASTER BATHROOM



MASTER BATHROOM

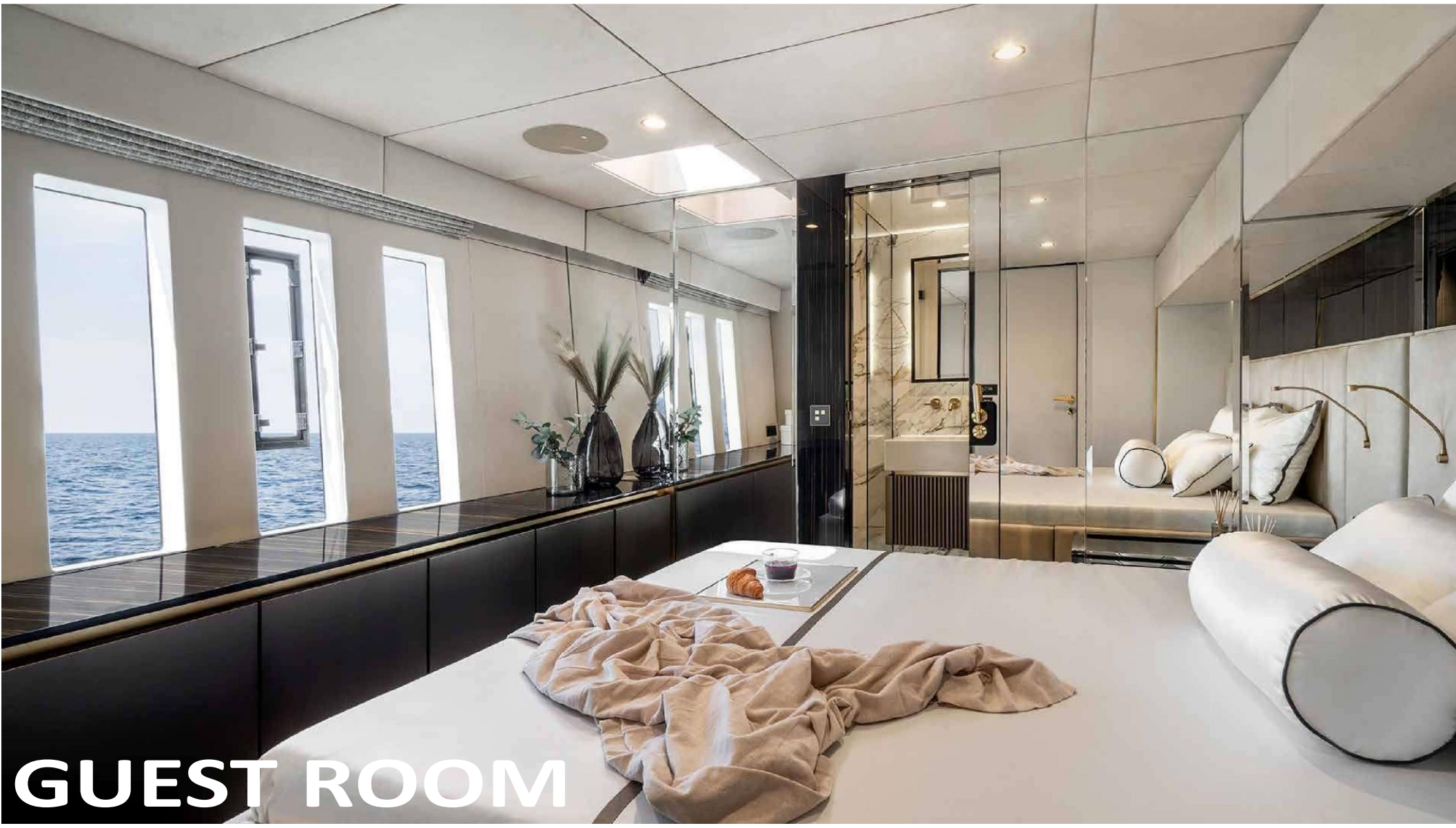
HULLS



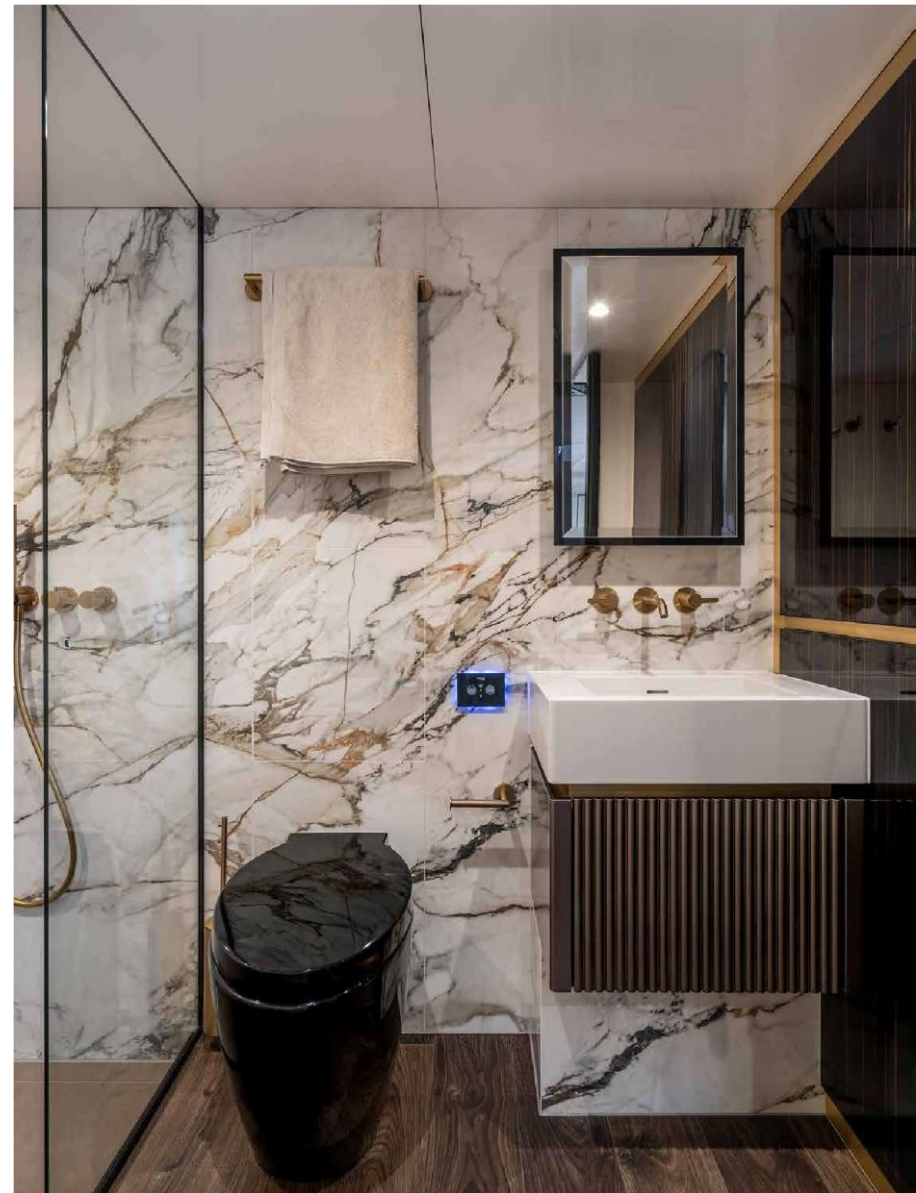
Diana RR's 4-cabin layout includes three airy guest staterooms with ensuite bathrooms and a luxury finish. The catamaran also features comfortable crew accommodation, a laundry room, a pantry and a sauna. In the aft cockpit, the relaxation space features a large dining table, a wet bar and a day bed.



GUEST ROOM



GUEST ROOM





GUEST ROOM



GUEST ROOM

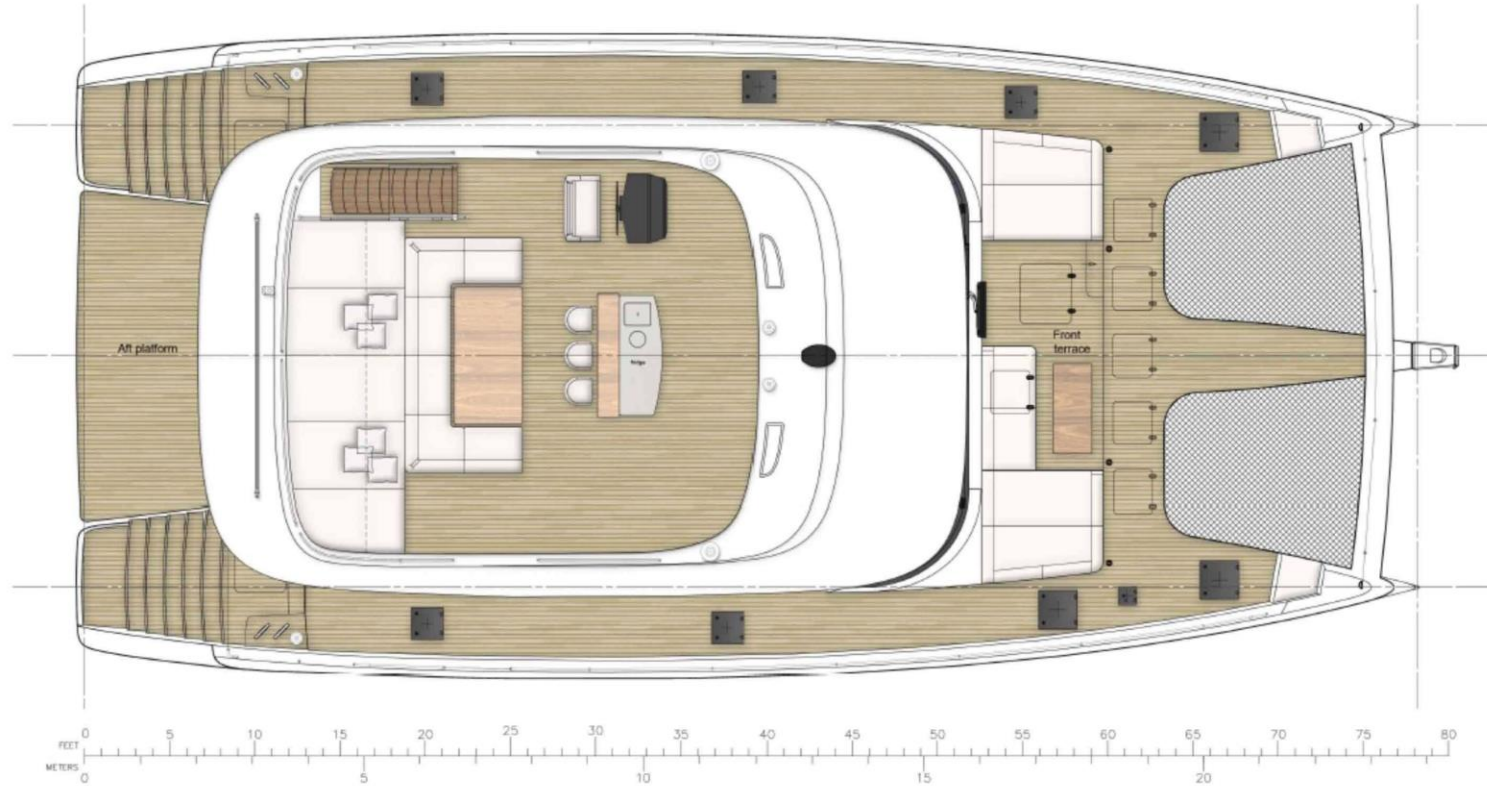




GUEST BATHROOM

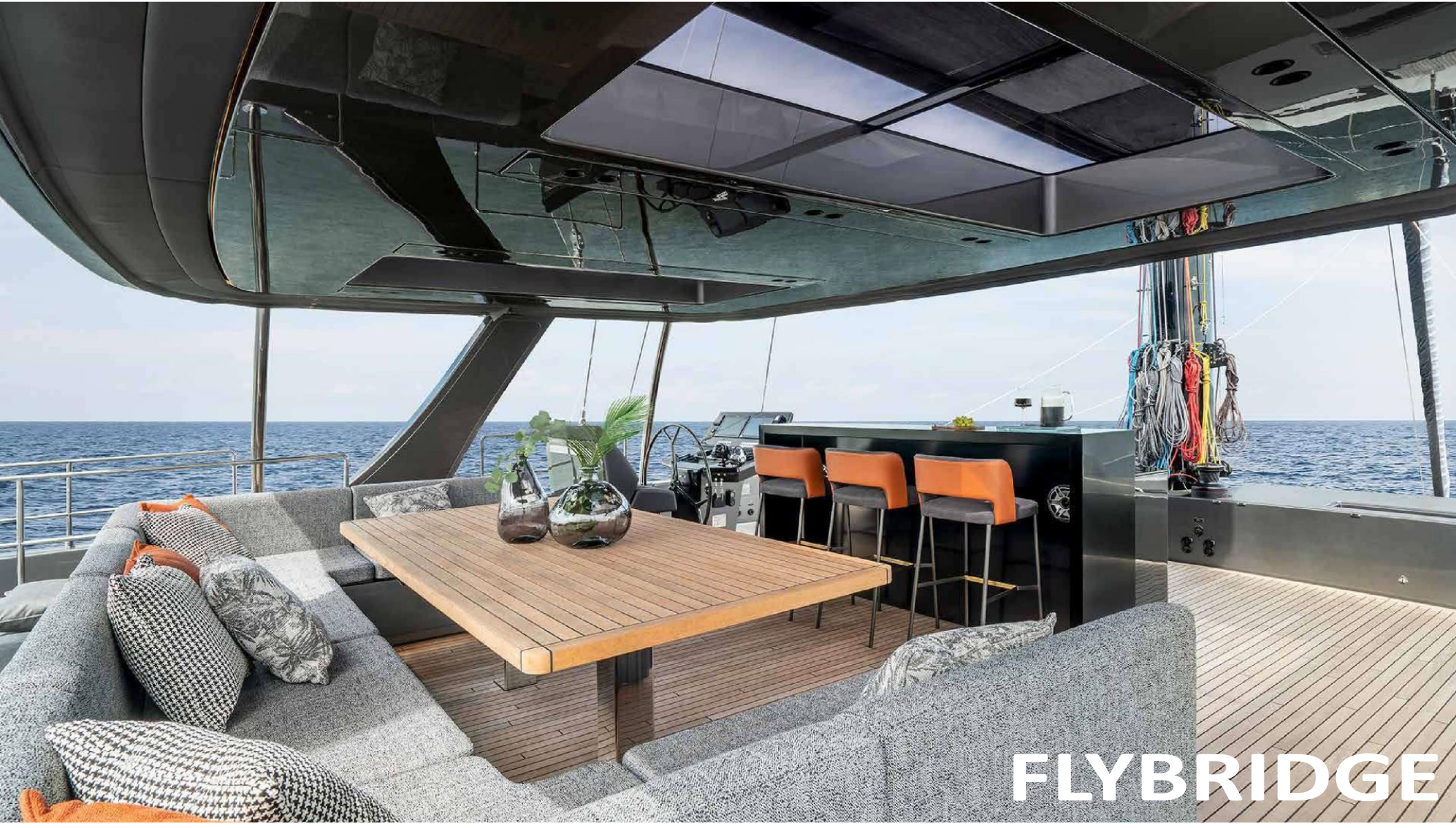
FLYBRIDGE

Towering over the Sunreef 80, the flybridge offers the ideal space for relaxation, with oversized sun pads, a large settee with a dining table and a bar with panoramic ocean views.

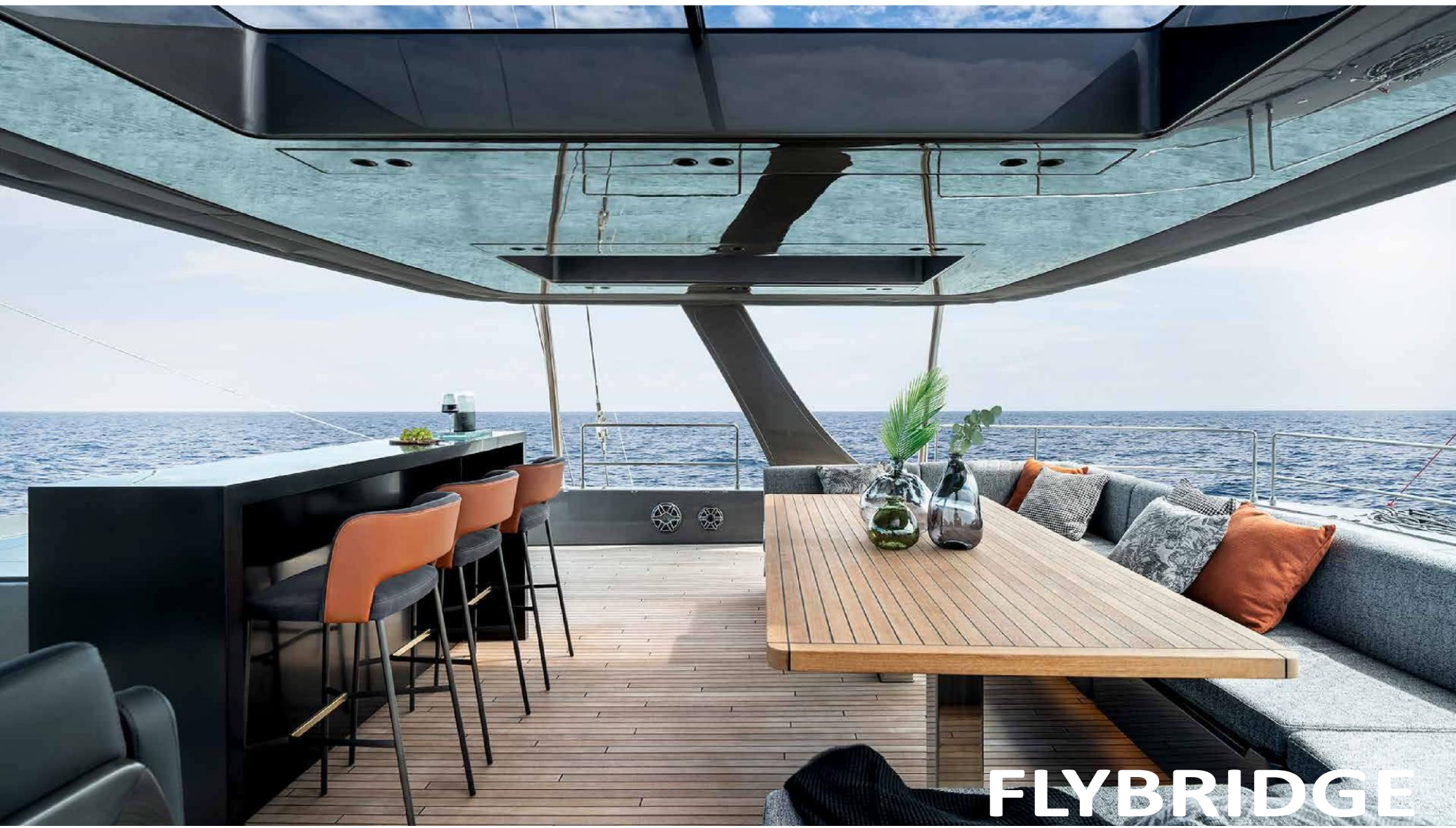




FLYBRIDGE



FLYBRIDGE



FLYBRIDGE



FLYBRIDGE



TOTAL LIVING SPACE

340 m²

GUESTS

8 + crew

4 CABIN LAYOUT

GALLEY UP

MAIN DECK

MAIN DATA

CONSTRUCTION	Composite
NAVAL ARCHITECTURE	Sunreef Yachts
CATEGORY	A
LENGTH OVERALL	23.87 m/ 80 ft
BREADTH OVERALL	11,53 m/ 37,9 ft
DRAFT	2,2 m
WATER CAPACITY	1600l
ENGINES	2x Engine John Deere (280hp)
FUEL TANKS	2X1600L
MAIN SAIL	200m ² /2152,7ft ²
GENOA	155m ² /1668,4 ft ²



MODEL VERSION

Custom layout with master cabin on the main deck, galley on the main deck, 3 guest cabins + crew cabin with separate entrance

Structure and hull finishing:

- Hulls, deck, flybridge and all structural bulkheads made of E-glass sandwich laminate in infusion technology.
- Hull external osmosis protection provided by vinylester resin
- Extended reinforced longitudinal beam
- 2x Bow seats (one per each hull)

Bimini

- Full composite hard top bimini on the flybridge with integrated lights and fixed skylights – UPGRADE



RIGGING AND SAILS

Rigging (Mast and boom)

- Carbon performance mast - UPGRADE
- Carbon Boom (Park Avenue) – UPGRADE
- Mast steps up to boom level

Sails and sail handling systems

- Blocks and jammers
- Lazy jack and lazy bag
- Electric driven sail winches – UPGRADE
- Fully battened main sail made of Dacron 1st choice, cross cut, 2 reefs
- Genoa double pleated made of Dacron 1st choice
- Genoa electric furler
- Gennaker polyester - UPGRADE
- Complete gear for Gennaker including electric furling – UPGRADE

MAIN MACHINERY, PROPULSION AND MANEUVERING EQUIPMENT

Propulsion plant

- 2 x stainless steel propeller shafts
- 2 x Fixed pitch propellers (3 blade) with rope cutters
- 2 x Main engines - John Deere 6068SFM85 M2 209 kW (280 hp) each – UPGRADE
- 2 x Folding propellers for 280 hp Main Engines - UPGRADE
- Set of propulsion and speed control panels with levers on flybridge

Power Supply System

- Marine type generator set (20,5 kVA, 230 V AC @ 50 Hz, single phase) - parallel operations - UPGARE

Rudders and steering system

- 2 x Rudders (E-glass sandwich laminate in infusion technology)
- 2 x Rudder stocks (aluminium alloy)
- 2 x Sets of self-aligning lower and top bearings
- 2 x Emergency tillers
- Hydraulic steering system

Manouvering equipment upgrade

- 2 x Bow thrusters (intermittent operations) – UPGRADE

DECK EQUIPMENT

Anchor equipment

- Windlass 3500W, 24V – UPGRADE
- Polished stainless steel anchor 130 kg Ultra Marine VHHP - UPGRADE
- Anchor chain (diameter 14 mm DIN / 110 m length / galvanized) - UPGRADE
- Emergency anchor 20 kg + 20 m rope

Mooring equipment

- Mooring kit (8 fenders + 4 mooring ropes)
- 2 x Electrical mooring winch aft (Lewmar)

Towing equipment

- Towing line (50 m)

Access equipment

- Flush hatches on deck
- Swim ladder on the skirts
- Hatch at the top of the stairway between cockpit and flybridge
- Carbon folding manual gangway (350 cm) – UPGRADE
- Hydraulic platform 1000kg capacity– UPGRADE

INTERIOR

Crew cabins

- Starboard crew cabin with 3 beds with separate access from the main deck

Curtains and blinds

- Curtains and backdrop for entrance door
- Manual operated recessed blinds or plisses in cabins
- Manual operated concealed skyscreen on cabin ceiling hatches
- Electrically operated recessed blinds or plisses in the saloon

Galley and household appliances

- Refrigerator with freezer
- Dishwasher
- Electric oven
- Cooker with hood
- Washer/dryer
- Wine cooler for 32 bottles mounted in saloon – UPGRADE

EXTERIOR

External hull painting system

- Antifouling (with Epoxy primer)
- Flybridge in lacquer – UPGRADE
- Main deck elements in colored gelcoat - UPGRADE
- Side of hulls in colored gelcoat – UPGRADE

Deck covering

- Cockpit and skirts floor covered with teak – UPGRADE
- Deck covered with teak and installed flush hatches– UPGRADE
- Flybridge covered with teak– UPGRADE

External Doors

- Sliding door from cockpit to saloon (manual operated) - Stainless steel frames
- Pantograph fore access doors

Windows

- Fixed windows (tinted glass) on Main Deck
- Fixed portlights (Lewmar)
- Opening portlights - small (one per each cabin under Main Deck)

Open decks furniture

- All outside upholstery and cushions made of synthetic fabric (Sunbrella)
- Flybridge cushions and mattresses
- Cockpit and front deck mattresses
- Decorative pillows (25 pcs)
- Bar module in cockpit with sink with retractable faucet for the bar module, ice and ice maker – UPGRADE
- Bar module on the flybridge with sink with retractable faucet for the bar module, and low fridge – UPGRADE

PIPING SYSTEMS

Fuel System

- 2 x Fuel oil tanks 1 200 l each – UPGRADE

Bilge System

- Electrical bilge pumps
- 2 x Forepeak bilge pumps (one (1) per each forepeak) – UPGRADE
- piping and valves for bilge pumping

Fresh Water

- Fresh water tank with electronic readout level indicators (volume 1600 l)
- Fresh water pressurizing pump
- 2 x Fresh water heaters (100 l capacity each)
- Fresh water inlet (Connection between the boat's water network and the shore water supply)
- Hand shower on deck
- Shower head on the cockpit ceiling with mixing valve– UPGRADE
- Watermaker 280l/h - 220V – UPGRADE

Deck Wash System

- Pressurized fresh water outlet on cockpit (female quick-coupling snap connector)
- Fresh water outlet for washing the deck
- Fresh water outlet at lower mast area
- Fresh water outlet in the cockpit
- Retractable hose (5mb) in chain locker for chain wash

Sanitary Drains System

- Blackwater tanks 350l
- Electric Sewage discharge pump
- Electric toilets 24V in bathrooms with fresh water flush

HVAC System

- Air conditioning system - capacity 150 000 BTU/h
- Air conditioning for forepeaks– UPGRADE

ELECTRICAL SYSTEMS

AC distribution system

- Main Switchboard AC 230V @ 50 Hz, 1 phase with extension panel
- Semi-automatic power supply changeover from shore to generators
- 2 x Shore connection (32A , 230V @ 50 Hz, 1 phase) – UPGRADE
- 2 x Battery chargers (Input: 230V @ 50 Hz, 1 phase Output: 24V DC / 100 A)
- Inverter 220V/ 50 Hz/ 5000W
- 230V @ 50 Hz sockets: three (3) socket per cabin, four (3) in Saloon, four (4) in Dining Area, four (4) in Galley
- Inverter 120V/ 60 Hz/ 3000W + 10 Sockets – UPGRADE

DC distribution system

- Main Switchboard 25.6V DC
- DC distribution system and wiring
- DC-DC charger for 24V battery bank
- Lithium battery banks (25.6V DC / 14,0 kWh)
- Sets of starting batteries for gensets
- 2 x Chargers for Genset starting batteries (one per each engine room)

Automation system

- Automation system (Domotic) with following functions shall be installed:

Control:

- Lighting with dimming
- Navigation lights
- Control of valves and pumps of black water

Measurement:

- Tank level monitoring with alarm: fresh water, black water, fuel
- Battery and charger monitoring with alarm: starter/ main batteries bank/ emergency batteries (if installed)
- Measurement of temperature in the engine room

LIGHTS

Lighting system

- Deck light
- Interior lighting with LED lamps
- Lights in the engine rooms
- Spot lights on skirt's steps and sidewalks
- Spot lights on front terrace deck and cockpit ceiling
- Domotic smart system controlling lights (including dimmers for ceiling lights)
- Exterior lighting package – underlighting of fixed furniture on flybridge and cockpit - LED stripe in white; cockpit ceiling two LED stripes surrounding in white; LED white stripes on skirts, bimini LED stripe surrounding in white if composite bimini ordered
- 12 x Underwater lights LED – UPGRADE

NAVIGATION EQUIPMENT

- Navigation lights with LED lamps
- Position lights LED
- Compass (size 135mm)
- Chronometer
- Barometer
- Raymarine Navigation Package

2 x Raymarine Axiom XL 16" Touch Multifunction Display– UPGRADE

Raymarine RD424HD 24" 4kW 608mm digital radome radar

Raymarine Evolution autopilot

Raymarine AIS700 - Automatic Identification System

Multisensor (depth, speed & temperature sensor)

Wind sensor

GPS

Raymarine Modular Dual-Station VHF Radio System Ray90

Searchlight with control unit

Electric Fog Horn

Wireless autopilot controller

- 6 x External camera with color and night vision - UPGRADE

AUDIO-VIDEO AND IT EQUIPMENT AND SERVICES

- Saloon Audio Video package with 5 x Premium ceiling speakers (round) and Active subwoofer – UPGRADE
- Outdoor Hi-Fi Audio package with 2 x Marine built-in speakers in the cockpit,
- 4 x Marine built-in speakers on flybridge and 2 x Marine built-in subwoofers (10') for flybridge – UPGRADE
- 4 x Marine built-in speakers on front terrace - UPGRADE

OTHER

- Mast and boom painted in black- UPGRADE
- Additional refrigerator below the floor in portside hull - UPGRADE
- Williams Sportjet 520
- Ten for the front terrace on carbon pillars - Upgrade

SAFETY EQUIPMENT

- Automatic fire extinguishing system in the engine rooms – UPGRADE
- Complete rescue equipment with life-rafts for 16 persons

80's Sunreef

CONTACT US
contact@fgyachts.com



FG YACHTS